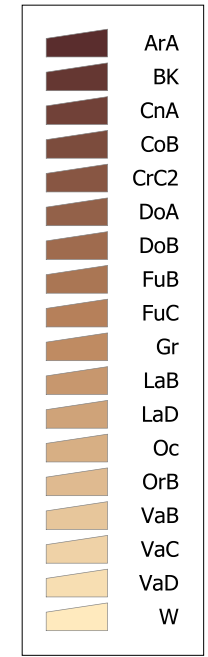
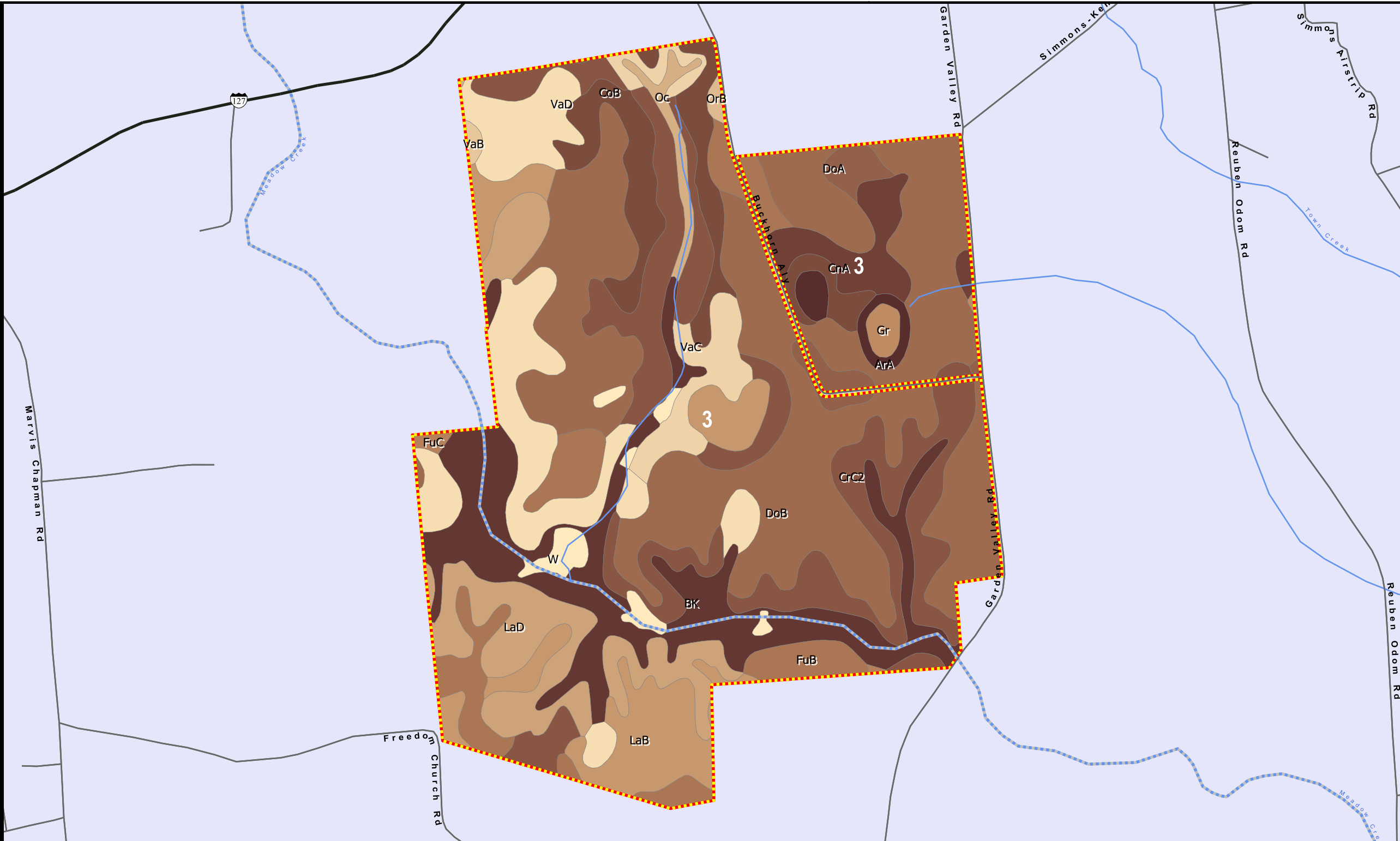
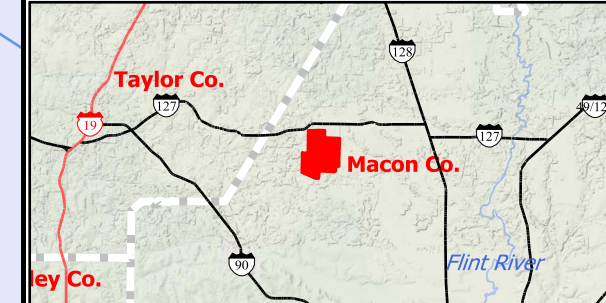


BUCKHORN-FARMS

COUNTY:MACON
 STATE:GA
 ACRES:1070.9
 Compartment Number:1
 Tract:BUCKHORN-FARMS-1

Map Scale 1 in :1254 ft
 Reference Scale 1:15048

American Forest Management Inc.
www.americanforestmanagement.com



SOIL SYMBOL	SOIL NAME	FARMLAND	ACRES
ArA	Ardilla loamy sand, 0 to 2 percent slopes	Farmland of statewide importance	10.16
BK	Bibb and Kinston soils	Not prime farmland	125.18
CnA	Clarendon sandy loam	All areas are prime farmland	26.30
CoB	Cowarts sandy loam, 2 to 5 percent slopes	All areas are prime farmland	56.78
CrC2	Cowarts sandy loam, 5 to 8 percent slopes, eroded	Farmland of statewide importance	151.37
DoA	Dothan loamy sand, 0 to 2 percent slopes	All areas are prime farmland	15.79
DoB	Dothan loamy sand, 2 to 5 percent slopes	All areas are prime farmland	317.45
FuB	Fuquay loamy sand, 0 to 5 percent slopes	Farmland of statewide importance	58.80
FuC	Fuquay loamy sand, 5 to 8 percent slopes	Farmland of statewide importance	2.26
Gr	Grady sandy loam	Not prime farmland	4.98
LaB	Lakeland sand, 0 to 8 percent slopes	Not prime farmland	71.41
LaD	Lakeland sand, 8 to 15 percent slopes	Not prime farmland	77.89
Oc	Ochlockonee sandy loam	Farmland of statewide importance	9.73
OrB	Orangeburg loamy sand, 2 to 5 percent slopes	All areas are prime farmland	1.87
VaB	Vaocluse loamy sand, 2 to 5 percent slopes	Farmland of statewide importance	1.84
VaC	Vaocluse loamy sand, 5 to 10 percent slopes	Farmland of statewide importance	30.95
VaD	Vaocluse loamy sand, 10 to 20 percent slopes	Not prime farmland	94.83
W	Water	Not prime farmland	13.35

Compartment - 1						
STAND	DOM_S_NAME	YEAR_EST	DOM_SOIL1	DOM_SOIL2	DOM_SOIL3	ACRES
3	UNKNOWN	0	DoB - 317 ac.	CrC2 - 151 ac.	BK - 125 ac.	1,070.9

TOTAL ACRES = 1070.9



AMERICAN FOREST
 MANAGEMENT

This product is for informational purposes and may not have been prepared for, or suitable for legal, engineering or survey purposes. Users should review or consult the primary data sources to ascertain the usability of the information.