

SHAVER FARMS

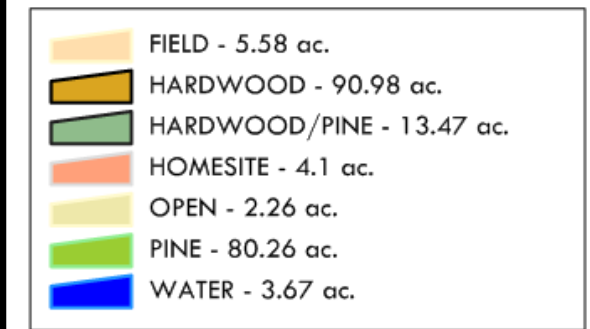
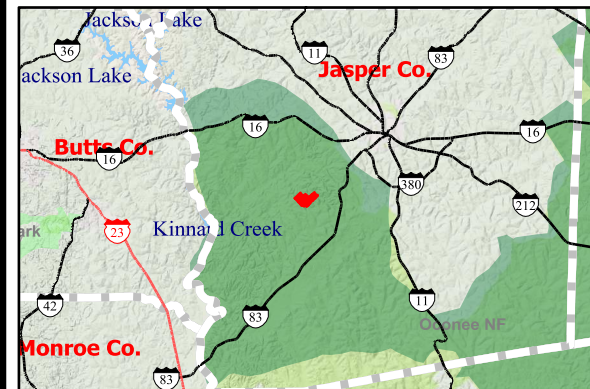
COUNTY: JASPER

STATE: GA

ACRES: 200.32

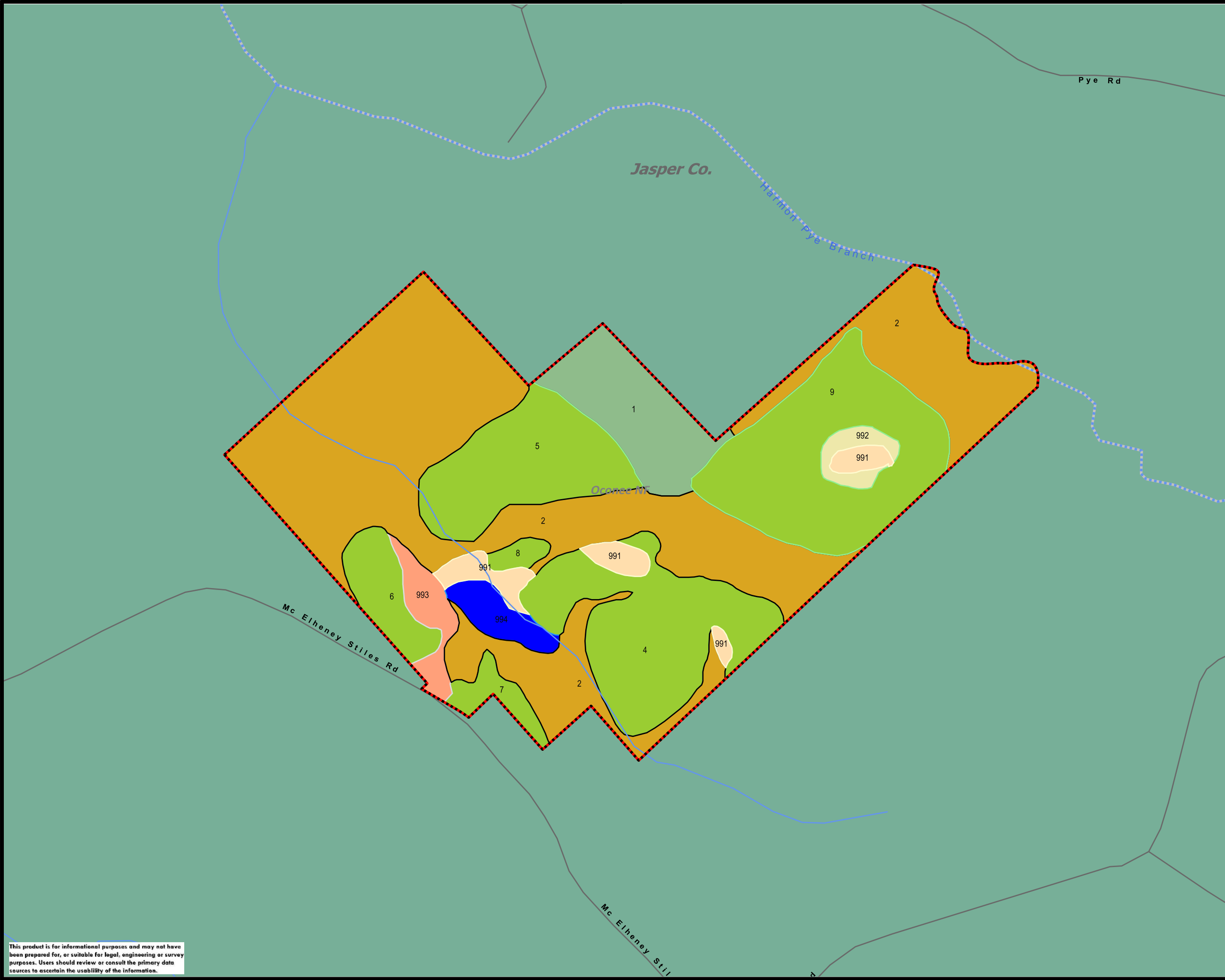
Map Scale 1 in :594 ft
Reference Scale 1:7128

American Forest Management Inc.
www.americanforestmanagement.com



Compartment - 1

STAND	DOM_S_NAME	S_T_DESC	ACRES
1	HARDWOOD/PINE		13.47
2	HARDWOOD	BOTTOMLAND	90.98
4	PINE	PINE PLANTATION	23.88
5	PINE	PINE PLANTATION	17.88
6	PINE	PINE PLANTATION	6.07
7	PINE	PINE PLANTATION	3.05
8	PINE	PINE PLANTATION	1.36
9	PINE	PINE PLANTATION	28.02
991	UNDEFINED	FIELD	5.58
992	UNDEFINED	OPEN	2.26
993	UNDEFINED	HOMESITE	4.10
994	UNDEFINED	WATER	3.67
			TOTAL ACRES = 200.32



This product is for informational purposes and may not have been prepared for, or suitable for legal, engineering or survey purposes. Users should review or consult the primary data sources to ascertain the usability of the information.

