



**AFM  
REAL ESTATE**

**FOR SALE**

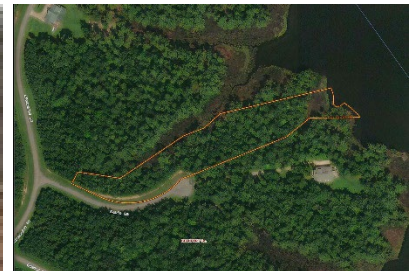
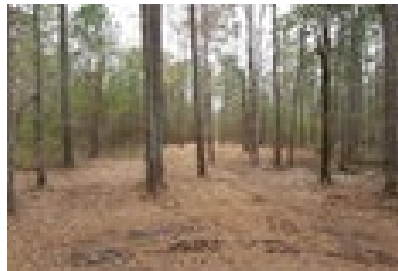
## **LOT 18 SMUGGLERS COVE**

**±3 Acres - \$42,000  
Beaufort County, NC**

Looking for that place to build the getaway you've always wanted! Look no further!

Lot 18 in the Gated Community of Smugglers Cove on Ross Creek is that place.

Conveniently located near Bath, Belhaven, and Washington!



### **DIRECTIONS:**

- From Raleigh, Take US-64E/US-264E to Wilson/Rocky Mount.
- Take exit 436 for US 264E toward Wilson/Greenville for 56 miles.
- Take exit 73B toward Washington for 10 miles.
- Stay on US-264E for 27 miles.
- Slight right on NC-92E for 15 miles.
- Right on Wheat Patch Rd for 1.7 miles.
- Left on Alexander drive for 0.5 miles.
- Turn right on Davis Lane.
- Property on left.

### **CONTACT:**

Robin Fleming  
Broker-In-Charge – Licensed in NC  
AFM Real Estate  
2404 Montgomery Dr. SW, Unit D  
Wilson, NC 27893  
📞 919.876.3331 | 📠 919.215.5621  
Robin.Fleming@afmforest.com

Neither seller nor its representatives warrant the completeness or accuracy of the information. Each prospective purchaser should make its own determination as to timber volumes, timber quality, logging feasibility, acreage, access, and federal and state environmental and regulatory constraints relating to the use of the property and the harvest of timber therefrom. Seller, its brokers, managers, agents and employees, make no representation or warranties, express or implied, as to the accuracy or completeness of the information contained herein or as to the property, its condition, boundaries, timber volumes, acreage, wetlands, or fitness for a particular purpose. The successful purchaser will accept the property in its present condition, "AS IS, WHERE IS, with all faults", at closing.