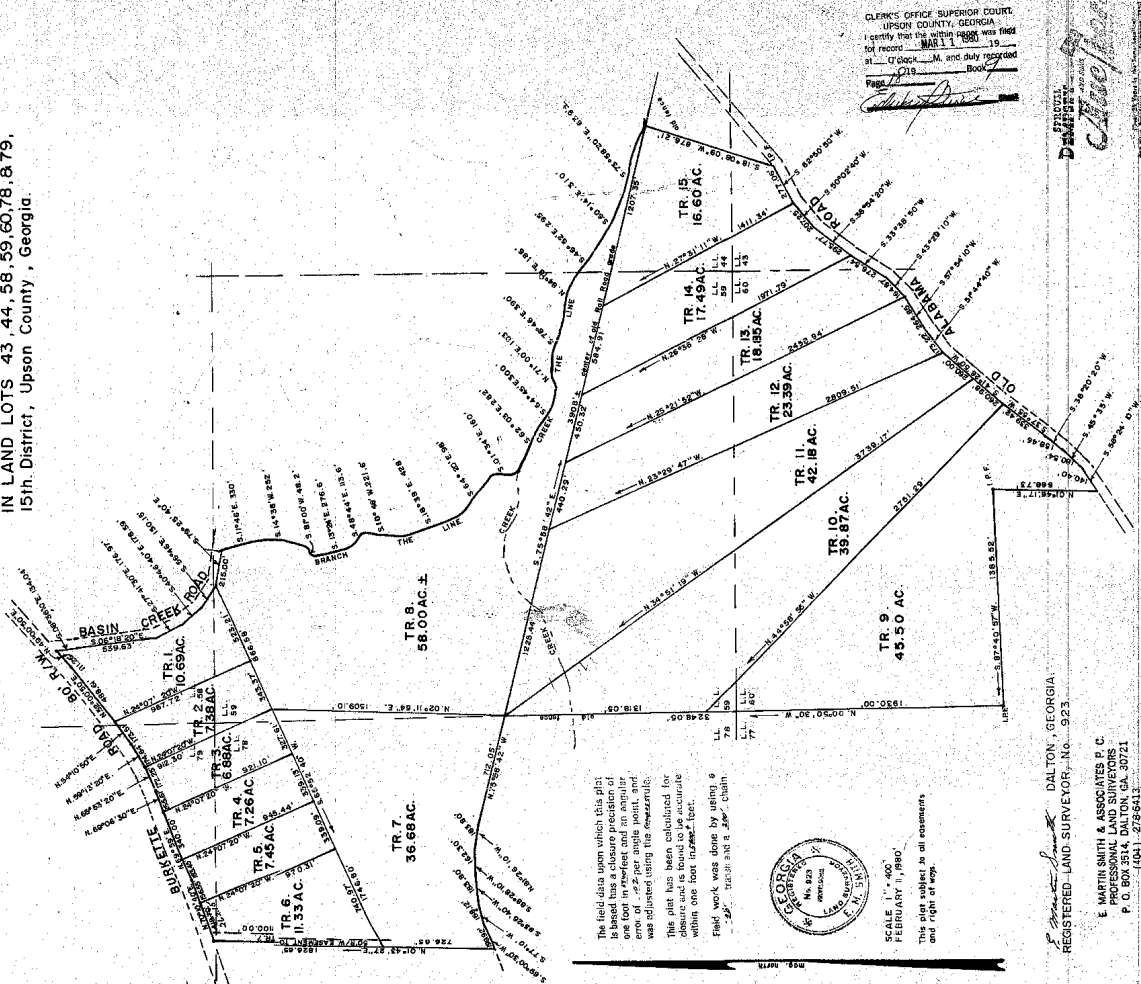


NAVCO TIMBERLANDS, INC.
IN LAND LOTS 43, 44, 58, 59, 60, 78, & 79,
15th District, Upson County, Georgia.



The field data upon which this plat is based has a closure precision of one part in 100,000. The survey was adjusted using the *method of least squares*. The plat has been calculated for closure and is found to be accurate within one foot in 100,000 feet. Field work was done by using a *Leica* tachometer and a *Leica* chain.



SCALE 1" = 400'
FEBRUARY 11, 1980
This plat is subject to all easements and rights of way.

CLERK'S OFFICE SUPERIOR COURT,
UPSON COUNTY, GEORGIA.
I certify that the within plat was filed for record on MAR 1 1980 at 10 o'clock A.M. and duly recorded.
Page 212 Book 100



E. Martin Smith & Associates P.C.
REGISTERED LAND SURVEYOR, No. 923
DALTON, GEORGIA
P. O. BOX 3514, DALTON, GA. 30721
404-276-6812
martin.smith

2475