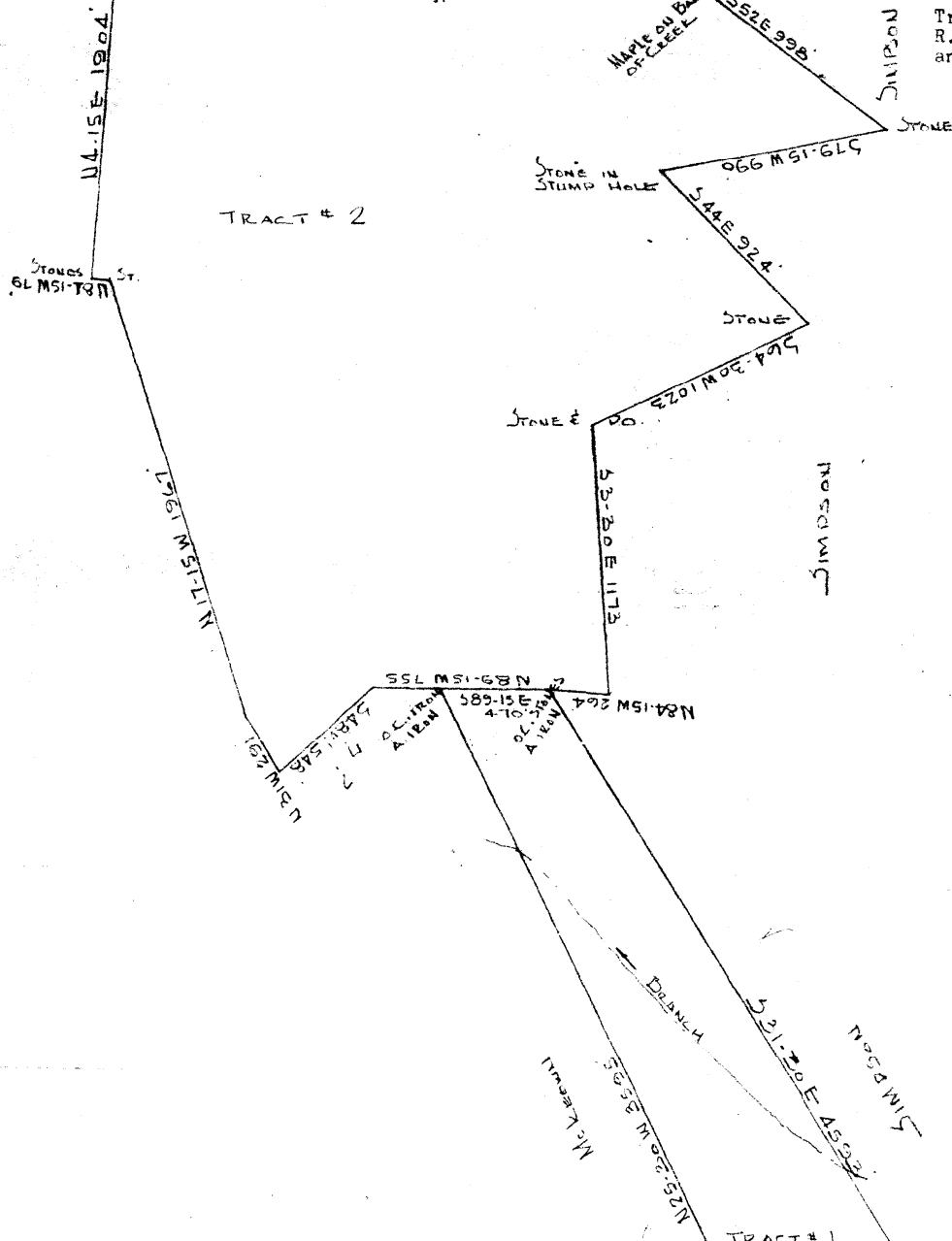


ABOUT 589E 1366  
ROCK IN WIDENING OF LITTLE TURKEY CREEK

UP 45E 27  
118.45E 66  
548.30E 81.7  
544.5E 107.8  
582E 123.8  
N 84.30E 125  
N 82.45E 125  
549.15E 116  
56.515E 83  
549E 66  
536.45E 132  
51.45W 117  
542.30E 126  
589.30E 220

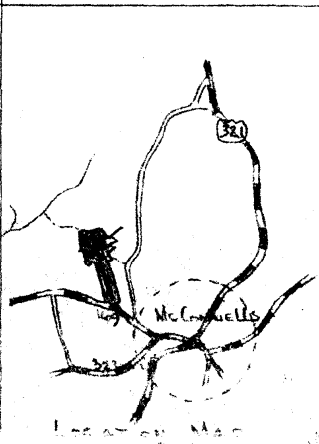
Note: Tract # 2 was surveyed by Henry Hood Aug 2 1941 as shown in plat book C page 172 in clerk of courts office for York County and contains 199.36 Acres. This tract was not surveyed by R.H. Maret.

Tract # 1 was surveyed by R.H. Maret 29 July 1960 and contains 60 Acres.



TRACT # 2

TRACT # 1



Property of  
CATAWBA TIMBER COMPANY  
York County, S.C.  
Known as J.O. Moore et al tract  
R.H. Maret --- Rez. Surveyor  
Scale 1" = 500' --- 29 July 1960  
Tract 1 and tract 2 contains total  
of 259.36 Acres

A. ROAD NE CORNER OF ROAD