

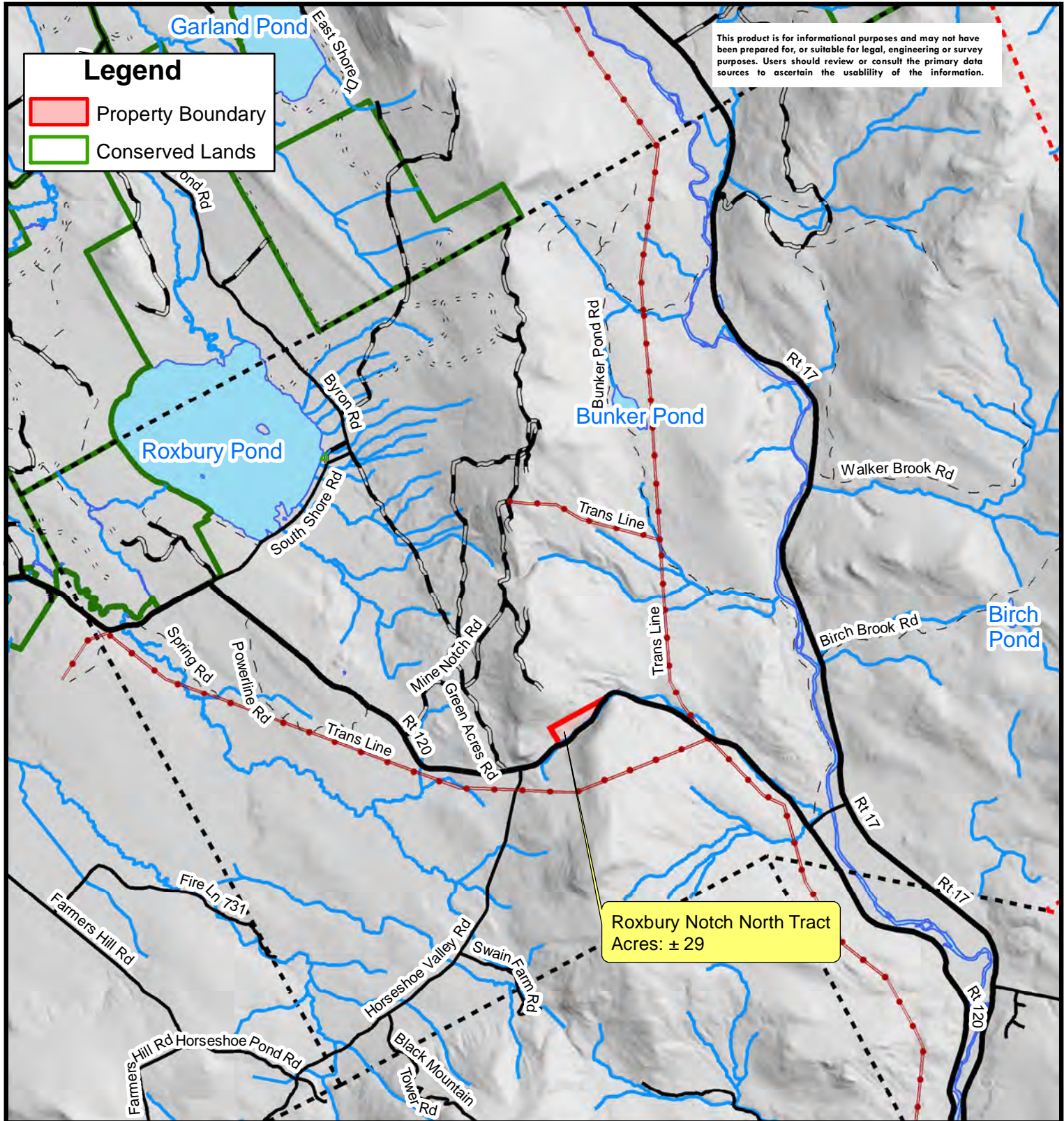


This product is for informational purposes and may not have been prepared for, or suitable for legal, engineering or survey purposes. Users should review or consult the primary data sources to ascertain the usability of the information.

Legend

-  Property Boundary
-  Conserved Lands



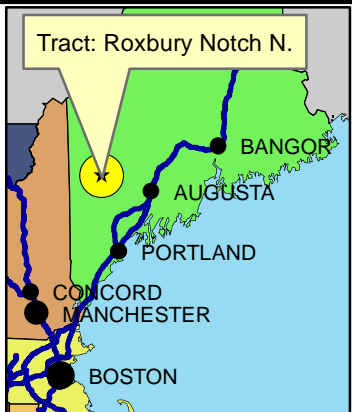
Roxbury Notch North Tract
Acres: ± 29



**AFM
REAL ESTATE**

John Colannino — Broker
40 Champion Lane
Milford ME, 04461
Cell: (207) 266-7355

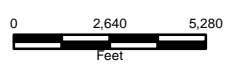
John.Colannino@afmforest.com



TRACT: ROXBURY NOTCH NORTH

TOWN: Roxbury
COUNTY: Oxford
STATE: Maine
GISACRES: ± 29

Sept. 1, 2021



American Forest Management, Inc.
www.americanforestmanagement.com