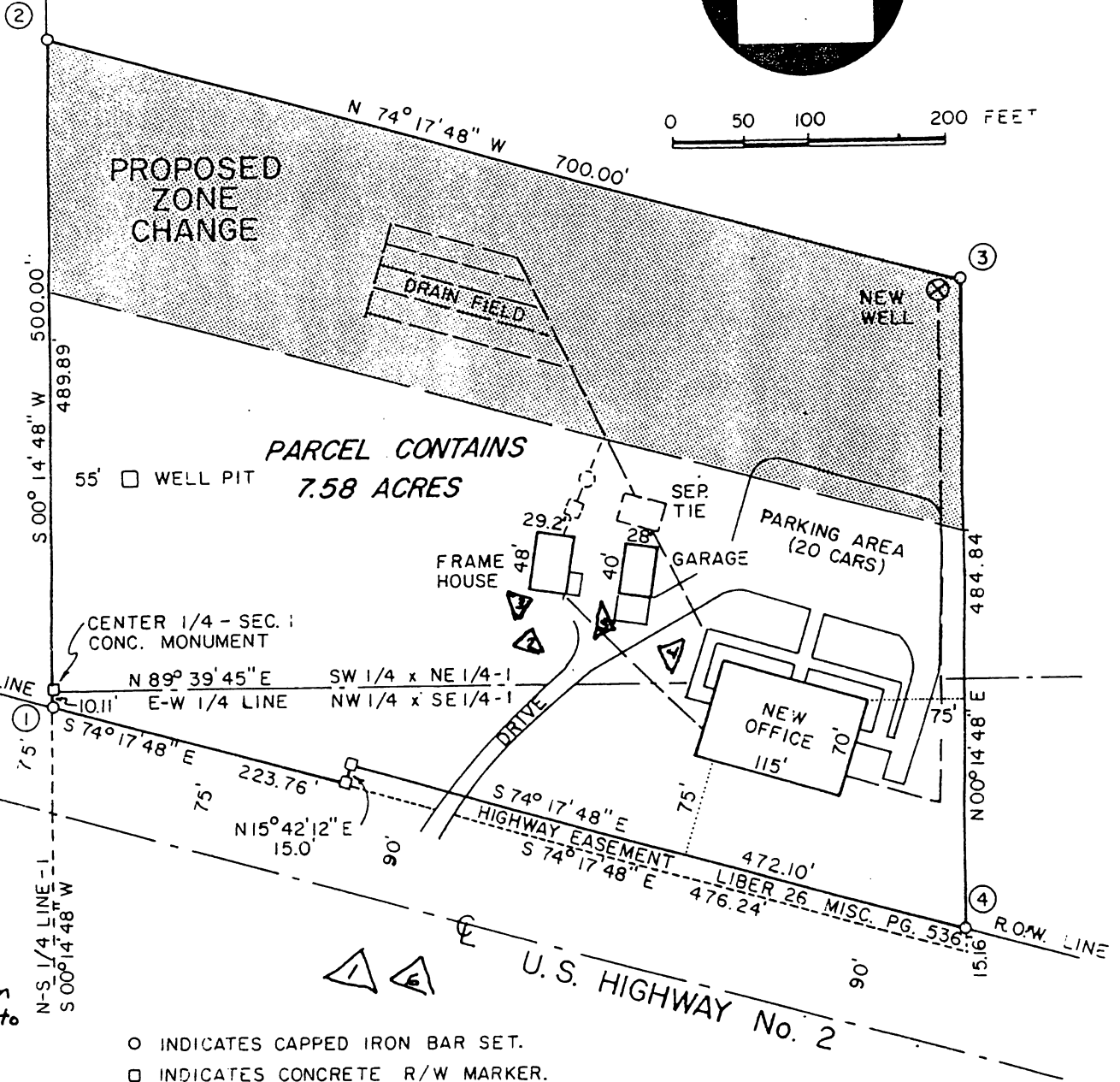


SEC. 1, T 39N - R30W



0 50 100 200 FEET



Direction of Photo ↑

△ = Photo #

- INDICATES CAPPED IRON BAR SET.
- INDICATES CONCRETE R/W MARKER.

SURVEY REF. TO C.I.C. QUINNESEC MILL SURVEY OF SEC. 1, T 39N - R30W. PARCEL CONTAINS 7.58 ACRES

BRUNING 40-21 40716

DRAWN	V. C.
CHECKED	P. H.
DATE	5-18-88
SCALE	NOTED
FILE NO.	

CHAMPION INTERNATIONAL CORPORATION
TIMBERLAND DIVISION
 — BUILDING SITE —

S-1

U.P. ENGINEERING AND ARCHITECTURAL ASSOCIATES, INC.
 322 SHELDEN AVE. HOUGHTON MICHIGAN 49931 PHONE 906-482-4810
 BRANCH OFFICE at NORWAY, MICHIGAN 49870 PHONE 906-563-5407

88198

Job No.

Sketch of Underground Lines
(approx - as of 6/1/89 - RLF)

May 23 - 19

Scale 1" = 50'

Champion Int. - Office Site Quinneseec, Mi.

- = Waste Elec Power & - (DEEP)
- - - = 110V LINES - outside lighting (SHALLOW)
- - - = Mech. Bell Phone Lines (DEEP)
- · - · = Waste Lines To Septic Tank (DEEP)
- - - = COAXIAL Cables - (DEEP)
- - - = PROPANE GAS LINES - (DEEP where Run by Gas Shallow elsewhere)

