

Source: NRCS Soil Survey

## All fields

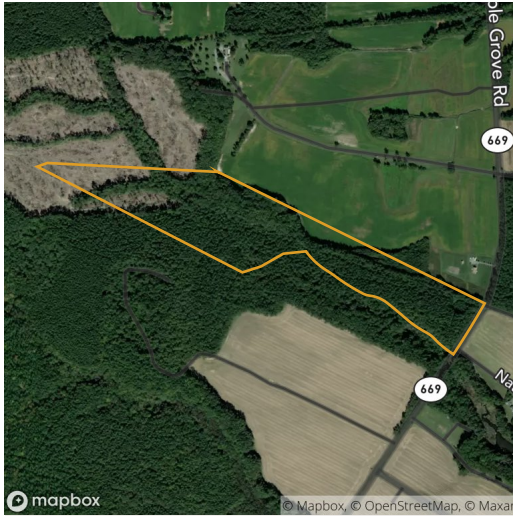
45 ac

SOIL CODE	SOIL DESCRIPTION	ACRES	PERCENTAGE OF FIELD	SOIL CLASS	NCCPI
Ot	Othello silt loam	13.00	28.7%	3	68.1
SsD	Sloping sandy land	10.55	23.3%	4	N/A
SaC2	Sassafras fine sandy loam, sloping, eroded	8.84	19.5%	3	56.2
Mx	Mixed alluvial land	6.32	13.9%	5	N/A
Mt	Mattapex silt loam	2.85	6.3%	2	75.0
SaA	Sassafras fine sandy loam, nearly level	1.53	3.4%	1	71.0
SaB	Sassafras fine sandy loam, gently sloping	1.43	3.1%	2	70.5
Wo	Woodstown fine sandy loam	0.77	1.7%	2	67.8
Dr	Dragston fine sandy loam	0.09	0.2%	2	64.0

1 field, 45 acres in Northumberland County, VA

N/A

1 field, 45 acres in Northumberland County, VA



**All fields**

45 ac



2019      2018      2017      2016      2015

■ Forest	76.6%	61.8%	53.3%	44.6%	62.5%
■ Non-Cropland	15.6%	31.8%	39.3%	48.0%	30.2%
■ Corn	7.5%	0.7%	7.2%	0.2%	7.4%
■ Soybeans	0.1%	5.6%	0.2%	7.2%	-
■ Other	0.1%	-	-	-	-

Source: NASS Cropland Data Layer