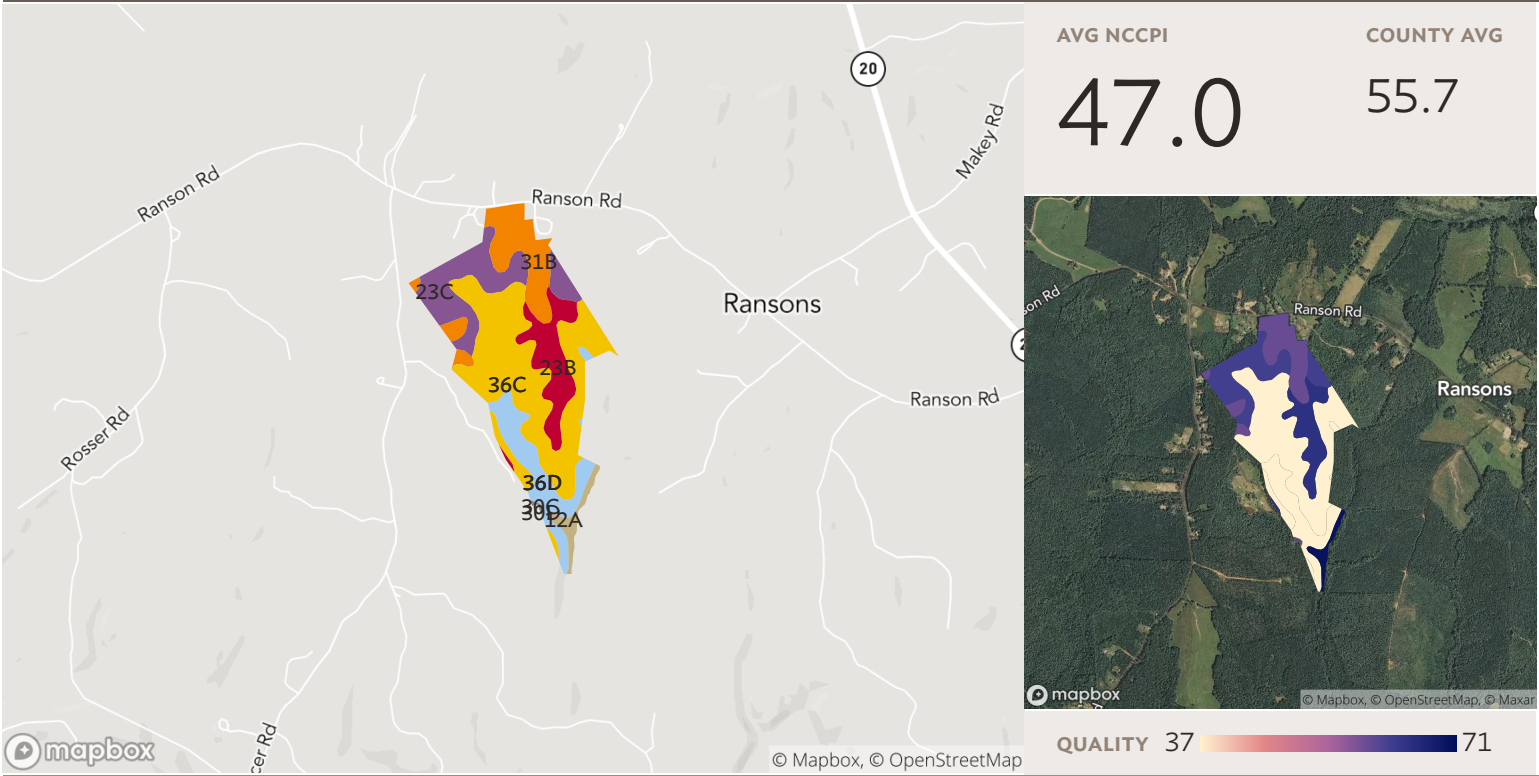


1 field, 148 acres in Buckingham County, VA



All fields

Source: NRCS Soil Survey

148 ac

SOIL CODE	SOIL DESCRIPTION	ACRES	PERCENTAGE OF FIELD	SOIL CLASS	NCCPI
36C	Spears Mountain silt loam, 7 to 15 percent slopes	61.62	41.5%	3	35.4
23C	Littlejoe silt loam, 7 to 15 percent slopes	25.73	17.3%	3	62.0
31B	Penhook loam, 2 to 7 percent slopes	21.55	14.5%	3	59.2
36D	Spears Mountain silt loam, 15 to 25 percent slopes	18.75	12.6%	4	30.5
23B	Littlejoe silt loam, 2 to 7 percent slopes	17.21	11.6%	2	64.6
12A	Codorus-Hatboro complex, 0 to 3 percent slopes, frequently flooded	3.29	2.2%	6	69.9
30C	Oak Level-Siloam complex, 7 to 15 percent slopes	0.24	0.2%	3	59.6
30D	Oak Level-Siloam complex, 15 to 25 percent slopes	0.02	0.0%	4	49.1
148.40					47.0