

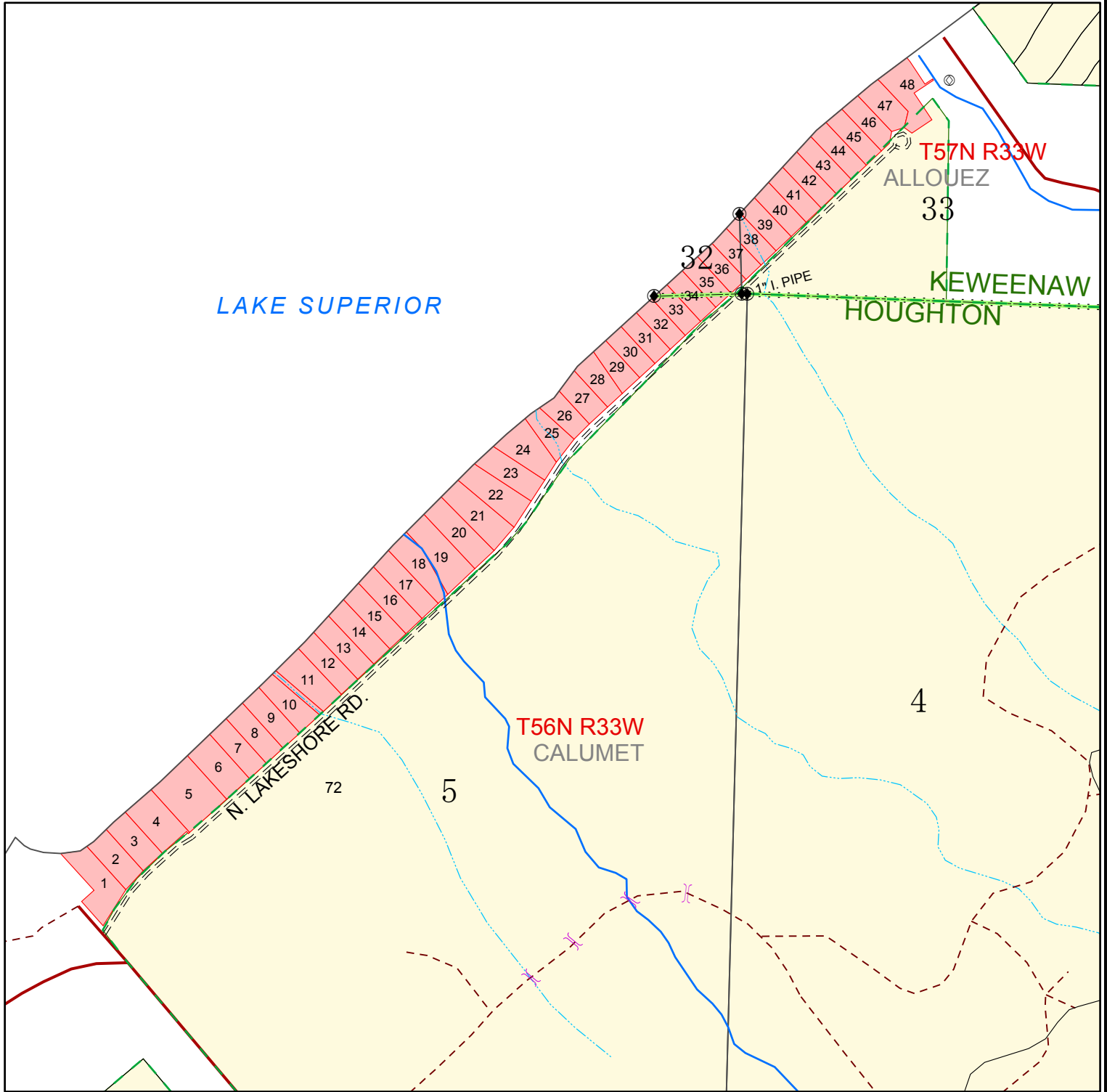


A subsidiary of
American Forest Management, Inc.
AFMrealestate.com

CALUMET LAKESHORE SUBDIVISION



COUNTY: HOUGHTON & KEWEENAW POLITICAL
TOWNSHIP: CALUMET & ALLOUEZ T 56 & 57 N, R 33 W



- | | | | |
|------------------------|--------------|------------------|-----------------|
| PLATTED LAKESHORE LOTS | Highway | Snowmobile Trail | County Boundary |
| Bridge | County Roads | Town Range Lines | recorded |
| Culvert | Woods Road | not recorded | location poster |
| Gate | Trails | Railroad | |