



This product is for informational purposes and may not have been prepared for, or suitable for legal, engineering or survey purposes. Users should review or consult the primary data sources to ascertain the usability of the information.

MOUNT
BRAM TWP

Maine Bureau of
Parks

Legend

-  Property Boundary
-  Conserved Lands

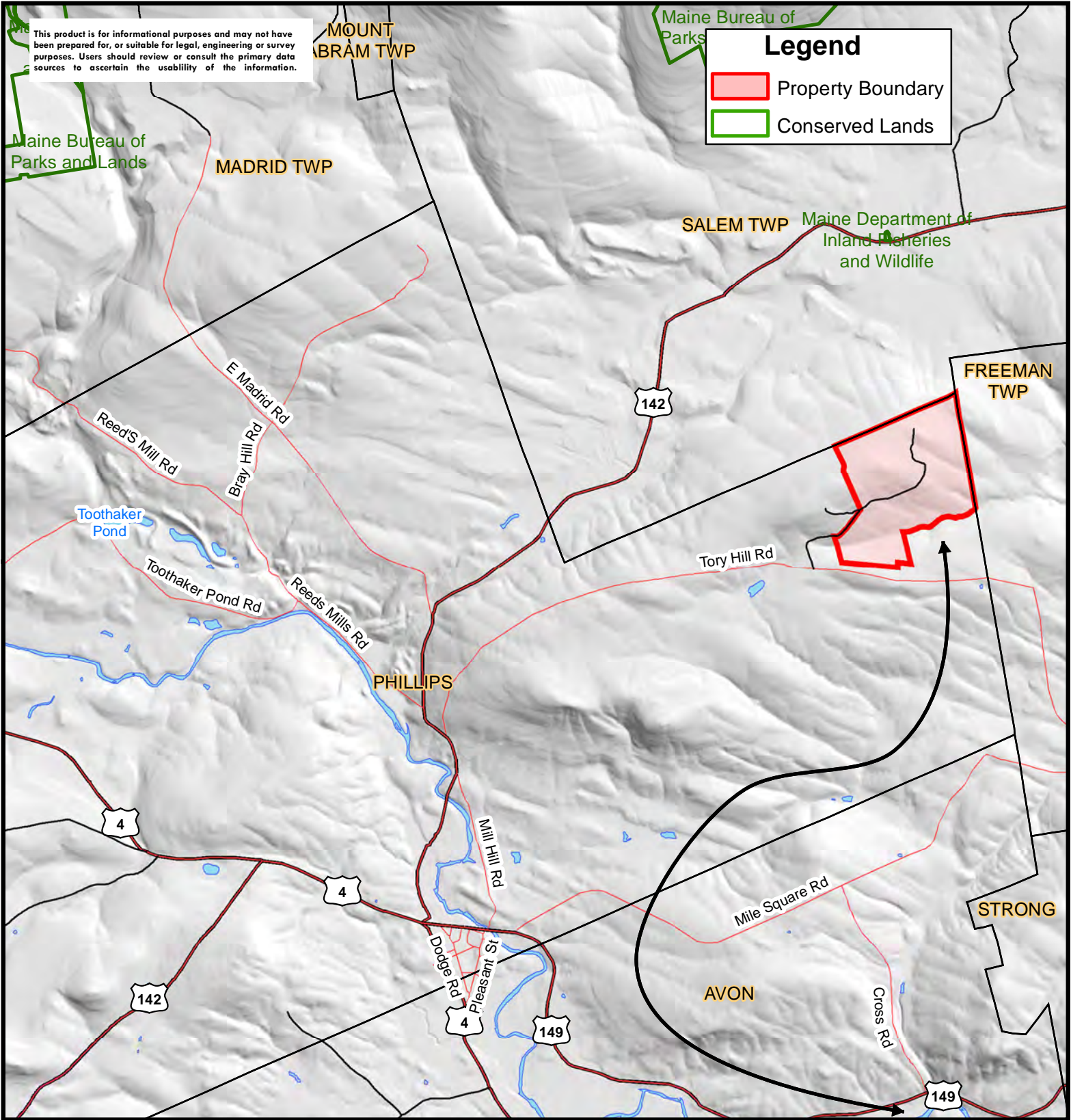
Maine Bureau of
Parks and Lands

MADRID TWP

SALEM TWP

Maine Department of
Inland Fisheries
and Wildlife

FREEMAN
TWP



**AFM
REAL ESTATE**

John Colannino — Broker
40 Champion Lane
Milford ME, 04461
Cell: (207) 266-7355

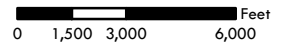
John.Colannino@afmforest.com



TRACT: TORY HILL

TOWN: Phillips
COUNTY: Franklin
STATE: Maine
ACRES: 557±

Sept 16, 2020



American Forest Management, Inc.
www.americanforestmanagement.com