

All fields

Source: NRCS Soil Survey

211 ac

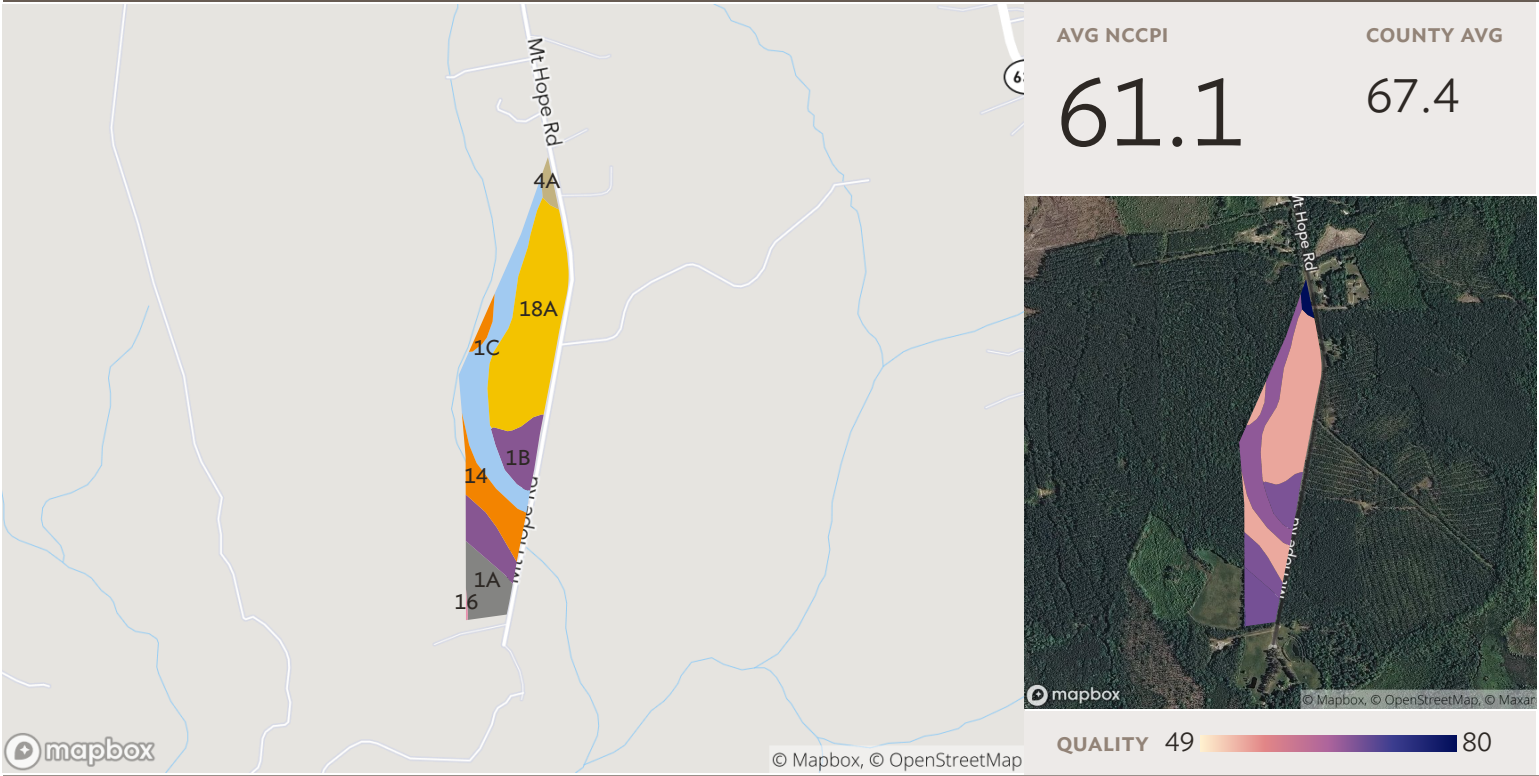
SOIL CODE	SOIL DESCRIPTION	ACRES	PERCENTAGE OF FIELD	SOIL CLASS	NCCPI
18A	Montross silt loam, 0 to 2 percent slopes	77.37	36.7%	2	54.4
1B	Ackwater silt loam, 2 to 6 percent slopes	53.47	25.4%	2	67.8
14	Kinston complex	35.00	16.6%	6	54.2
1C	Ackwater silt loam, 6 to 10 percent slopes	30.51	14.5%	3	66.5
2C3	Ackwater silty clay loam, 6 to 10 percent slopes, severely eroded	6.38	3.0%	4	37.9
4A	Aycock silt loam, 0 to 2 percent slopes	4.70	2.2%	2	82.8
1A	Ackwater silt loam, 0 to 2 percent slopes	2.73	1.3%	2	68.3
17	Lynchburg-Slagle complex	0.39	0.2%	2	70.5
16	Lynchburg loam	0.07	0.0%	2	69.5

2 fields, 211 acres in Prince George County, VA

210.63

59.9

2 fields, 211 acres in Prince George County, VA

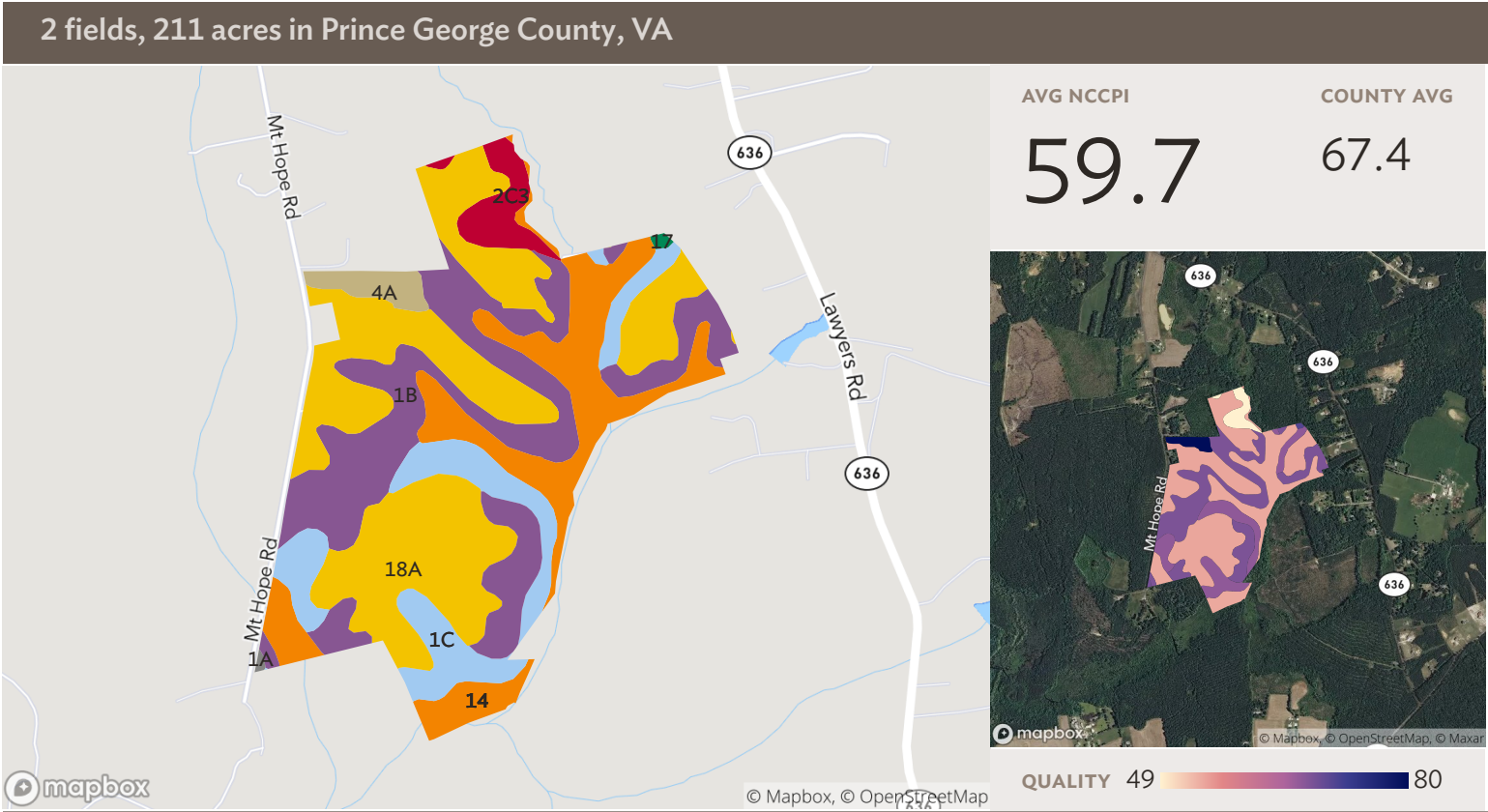


Field 1

Source: NRCS Soil Survey

31 ac

SOIL CODE	SOIL DESCRIPTION	ACRES	PERCENTAGE OF FIELD	SOIL CLASS	NCCPI
18A	Montross silt loam, 0 to 2 percent slopes	11.85	38.2%	2	54.4
1C	Ackwater silt loam, 6 to 10 percent slopes	7.74	24.9%	3	66.5
1B	Ackwater silt loam, 2 to 6 percent slopes	4.63	14.9%	2	67.8
14	Kinston complex	3.61	11.6%	6	54.2
1A	Ackwater silt loam, 0 to 2 percent slopes	2.58	8.3%	2	68.3
4A	Aycock silt loam, 0 to 2 percent slopes	0.57	1.8%	2	82.8
16	Lynchburg loam	0.07	0.2%	2	69.5
31.05					61.1



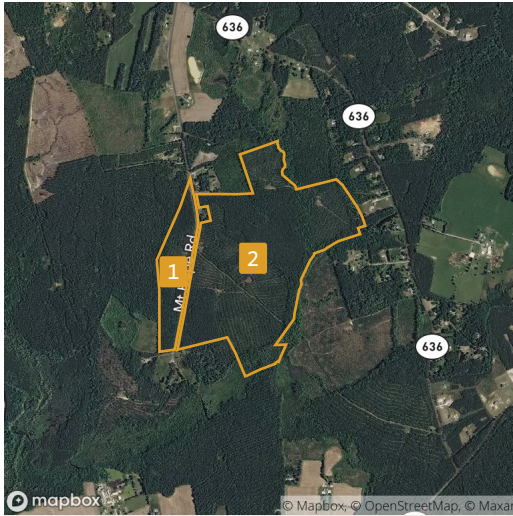
Field 2

Source: NRCS Soil Survey

180 ac

SOIL CODE	SOIL DESCRIPTION	ACRES	PERCENTAGE OF FIELD	SOIL CLASS	NCCPI
18A	Montross silt loam, 0 to 2 percent slopes	65.51	36.5%	2	54.4
1B	Ackwater silt loam, 2 to 6 percent slopes	48.85	27.2%	2	67.8
14	Kinston complex	31.39	17.5%	6	54.2
1C	Ackwater silt loam, 6 to 10 percent slopes	22.77	12.7%	3	66.5
2C3	Ackwater silty clay loam, 6 to 10 percent slopes, severely eroded	6.38	3.6%	4	37.9
4A	Aycock silt loam, 0 to 2 percent slopes	4.14	2.3%	2	82.8
17	Lynchburg-Slagle complex	0.39	0.2%	2	70.5
1A	Ackwater silt loam, 0 to 2 percent slopes	0.15	0.1%	2	68.3
179.58					59.7

2 fields, 211 acres in Prince George County, VA



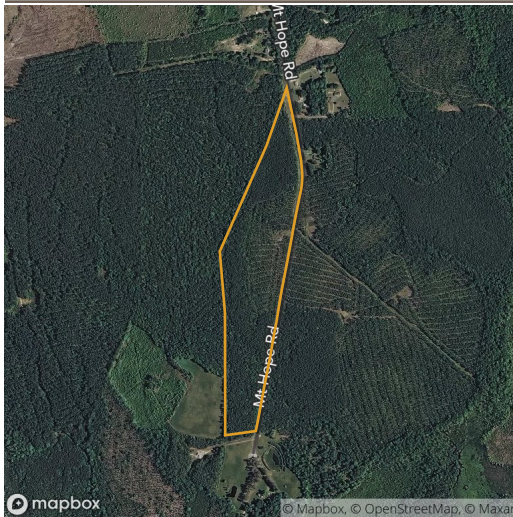
All fields

211 ac



2019 2018 2017 2016 2015

Forest	93.0%	88.7%	87.7%	85.8%	87.7%
Non-Cropland	6.5%	10.8%	12.0%	13.7%	11.8%
Other	0.4%	0.5%	0.2%	0.5%	0.5%



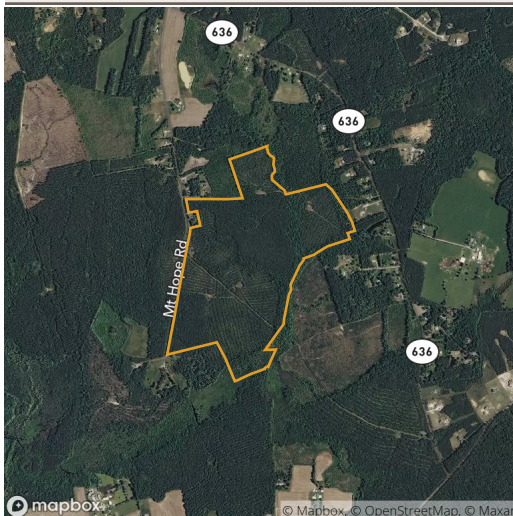
Field 1

31 ac



2019 2018 2017 2016 2015

Forest	88.9%	89.0%	88.0%	88.6%	88.9%
Non-Cropland	9.0%	8.1%	10.4%	8.2%	8.7%
Other	2.1%	2.8%	1.6%	3.2%	2.5%



Field 2

180 ac



2019 2018 2017 2016 2015

Forest	93.8%	88.6%	87.7%	85.4%	87.5%
Non-Cropland	6.1%	11.3%	12.3%	14.6%	12.4%
Other	0.1%	0.1%	-	-	0.1%

Source: NASS Cropland Data Layer