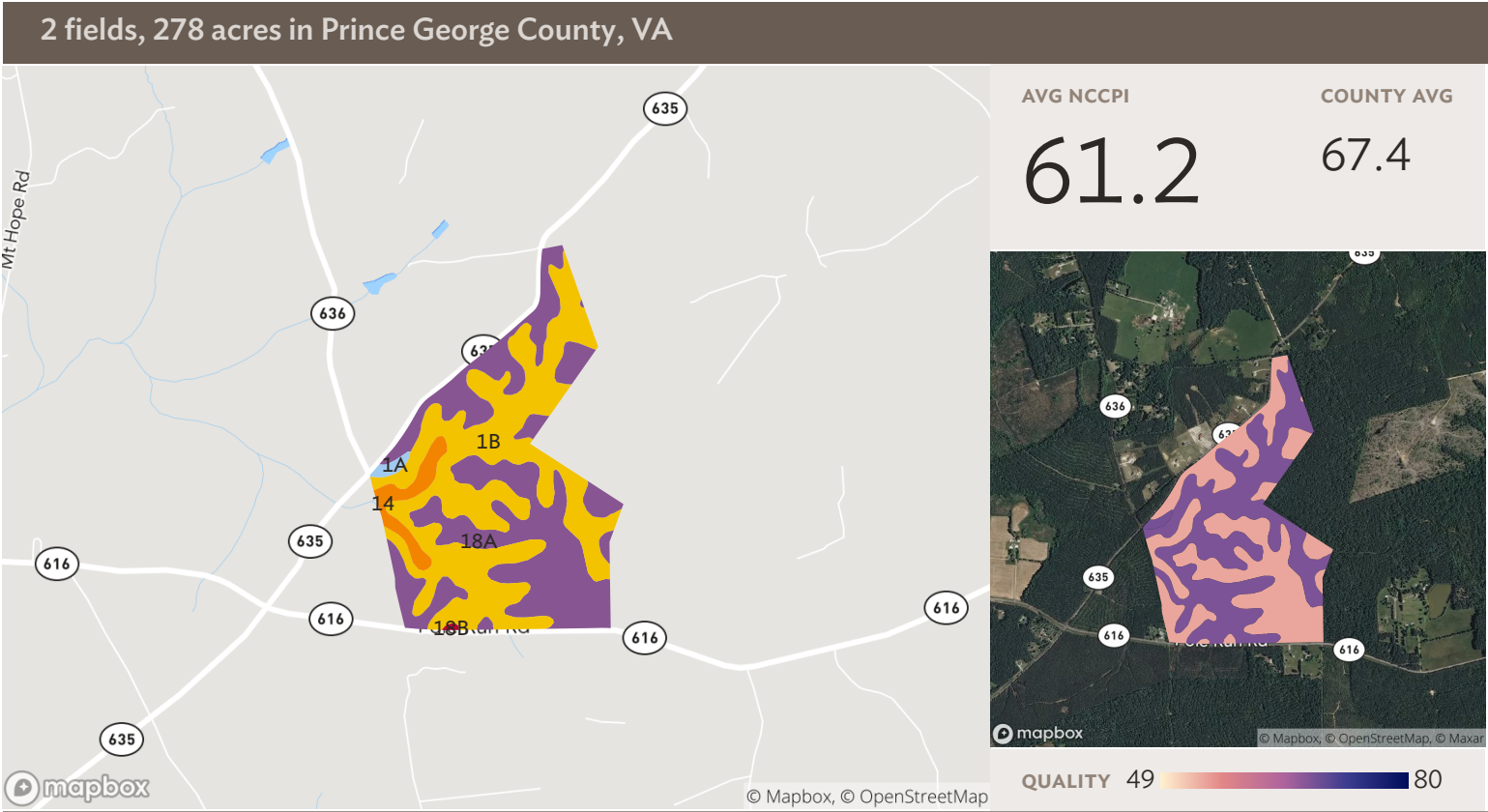


All fields

Source: NRCS Soil Survey

278 ac

SOIL CODE	SOIL DESCRIPTION	ACRES	PERCENTAGE OF FIELD	SOIL CLASS	NCCPI
1B	Ackwater silt loam, 2 to 6 percent slopes	137.68	49.5%	2	67.8
18A	Montross silt loam, 0 to 2 percent slopes	126.08	45.3%	2	54.4
14	Kinston complex	11.73	4.2%	6	54.2
1A	Ackwater silt loam, 0 to 2 percent slopes	2.25	0.8%	2	68.3
18B	Montross silt loam, 2 to 6 percent slopes	0.28	0.1%	2	54.0
278.01					61.1

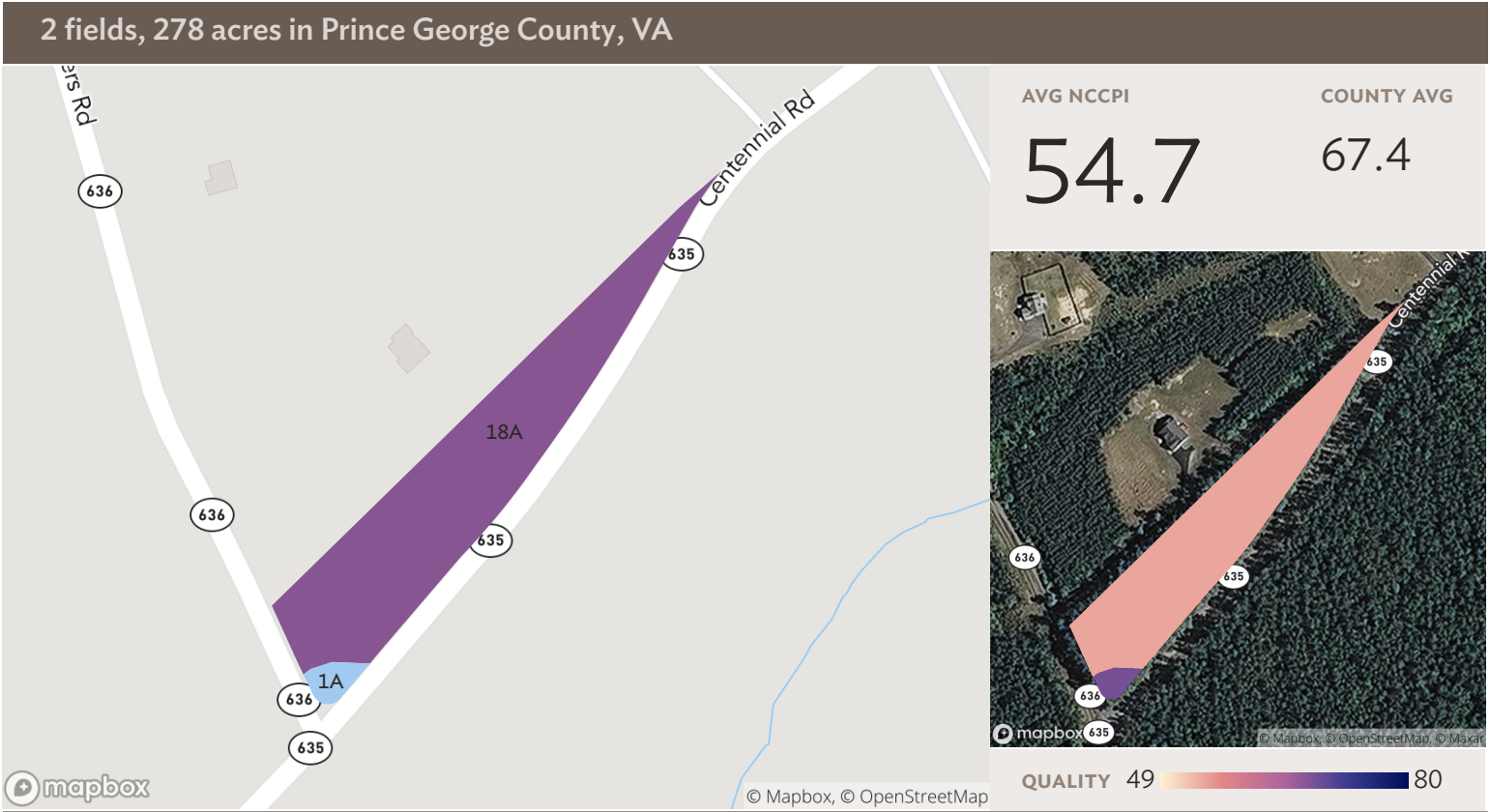


Field 1

Source: NRCS Soil Survey

275 ac

SOIL CODE	SOIL DESCRIPTION	ACRES	PERCENTAGE OF FIELD	SOIL CLASS	NCCPI
1B	Ackwater silt loam, 2 to 6 percent slopes	137.68	50.1%	2	67.8
18A	Montross silt loam, 0 to 2 percent slopes	122.67	44.7%	2	54.4
14	Kinston complex	11.73	4.3%	6	54.2
1A	Ackwater silt loam, 0 to 2 percent slopes	2.18	0.8%	2	68.3
18B	Montross silt loam, 2 to 6 percent slopes	0.28	0.1%	2	54.0
274.54					61.2



Field 2

Source: NRCS Soil Survey

3 ac

SOIL CODE	SOIL DESCRIPTION	ACRES	PERCENTAGE OF FIELD	SOIL CLASS	NCCPI
■ 18A	Montross silt loam, 0 to 2 percent slopes	3.40	98.1%	2	54.4
■ 1A	Ackwater silt loam, 0 to 2 percent slopes	0.07	1.9%	2	68.3
					3.47
					54.7

2 fields, 278 acres in Prince George County, VA



All fields

278 ac



	2019	2018	2017	2016	2015
Forest	94.9%	70.7%	84.5%	71.1%	85.5%
Non-Cropland	3.4%	28.5%	14.3%	27.8%	13.4%
Other	1.8%	0.8%	1.3%	1.1%	1.1%

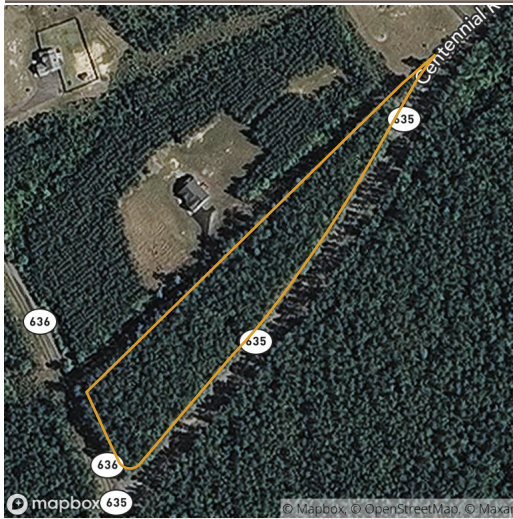


Field 1

275 ac



	2019	2018	2017	2016	2015
Forest	95.3%	70.8%	84.7%	71.5%	85.6%
Non-Cropland	2.9%	28.4%	14.1%	27.4%	13.2%
Other	1.8%	0.8%	1.3%	1.1%	1.1%



Field 2

3 ac



	2019	2018	2017	2016	2015
Forest	57.7%	64.2%	69.1%	42.7%	77.0%
Non-Cropland	40.9%	35.1%	30.3%	56.6%	23.0%
Other	1.4%	0.7%	0.7%	0.7%	-

Source: NASS Cropland Data Layer