

All fields

Source: NRCS Soil Survey

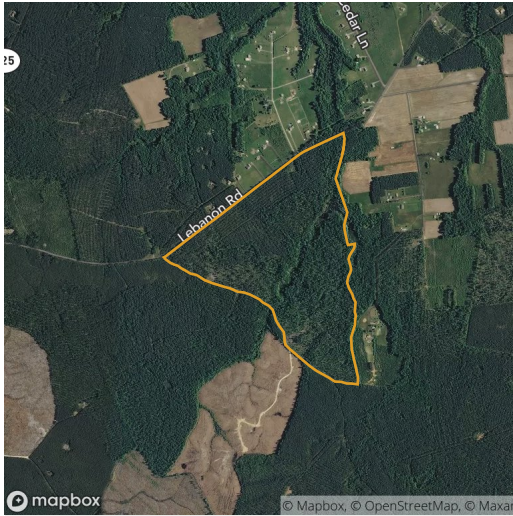
187 ac

SOIL CODE	SOIL DESCRIPTION	ACRES	PERCENTAGE OF FIELD	SOIL CLASS	NCCPI
13D	Emporia and Slagle soils, 6 to 15 percent slopes	59.41	31.7%	4	73.2
4A	Aycock silt loam, 0 to 2 percent slopes	32.18	17.2%	2	82.8
18A	Montross silt loam, 0 to 2 percent slopes	22.73	12.1%	2	54.4
1B	Ackwater silt loam, 2 to 6 percent slopes	19.92	10.6%	2	67.8
11B	Emporia fine sandy loam, 2 to 6 percent slopes	18.32	9.8%	2	79.8
21	Norfolk fine sandy loam	9.01	4.8%	2	75.3
14	Kinston complex	7.67	4.1%	6	54.2
12F	Emporia soils, 15 to 45 percent slopes	7.66	4.1%	7	18.0
1C	Ackwater silt loam, 6 to 10 percent slopes	6.93	3.7%	3	66.5

1 field, 187 acres in Prince George County, VA

■	18B	Montross silt loam, 2 to 6 percent slopes	3.28	1.8%	2	54.0
■	2C3	Ackwater silty clay loam, 6 to 10 percent slopes, severely eroded	0.29	0.2%	4	37.9
			187.39			69.1

1 field, 187 acres in Prince George County, VA



All fields

187 ac



2019 2018 2017 2016 2015

■ Forest	78.2%	66.1%	61.7%	65.9%	53.3%
■ Non-Cropland	21.7%	33.7%	38.0%	33.3%	46.3%
■ Other	0.1%	0.2%	0.3%	0.8%	0.5%

Source: NASS Cropland Data Layer