

All fields

Source: NRCS Soil Survey

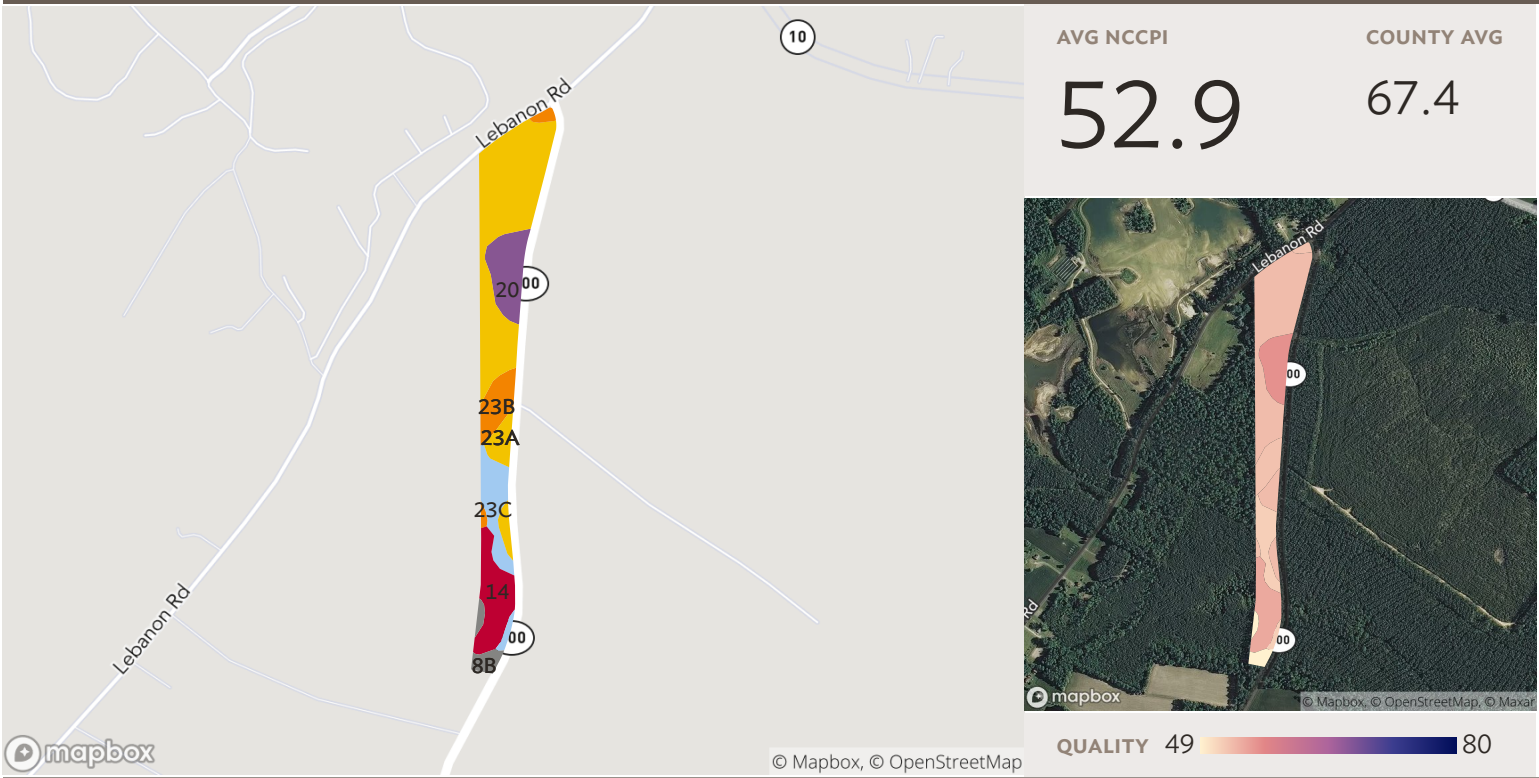
383 ac

SOIL CODE	SOIL DESCRIPTION	ACRES	PERCENTAGE OF FIELD	SOIL CLASS	NCCPI
23A	Peawick silt loam, 0 to 2 percent slopes	140.35	36.6%	2	52.8
20	Newflat silt loam	69.33	18.1%	3	55.9
23B	Peawick silt loam, 2 to 6 percent slopes	60.89	15.9%	2	52.4
23C	Peawick silt loam, 6 to 10 percent slopes	50.78	13.3%	3	51.4
14	Kinston complex	23.08	6.0%	6	54.2
30C	Wickham fine sandy loam, 6 to 10 percent slopes	13.40	3.5%	3	67.0
8B	Burrowsville sandy loam, 2 to 6 percent slopes	13.19	3.4%	2	43.7
8A	Burrowsville sandy loam, 0 to 2 percent slopes	5.06	1.3%	2	44.0
10	Chickahominy silt loam	3.19	0.8%	4	58.9

2 fields, 383 acres in Prince George County, VA

■	12F	Emporia soils, 15 to 45 percent slopes	2.90	0.8%	7	18.0
■	13D	Emporia and Slagle soils, 6 to 15 percent slopes	0.88	0.2%	4	73.2
			383.04			53.1

2 fields, 383 acres in Prince George County, VA

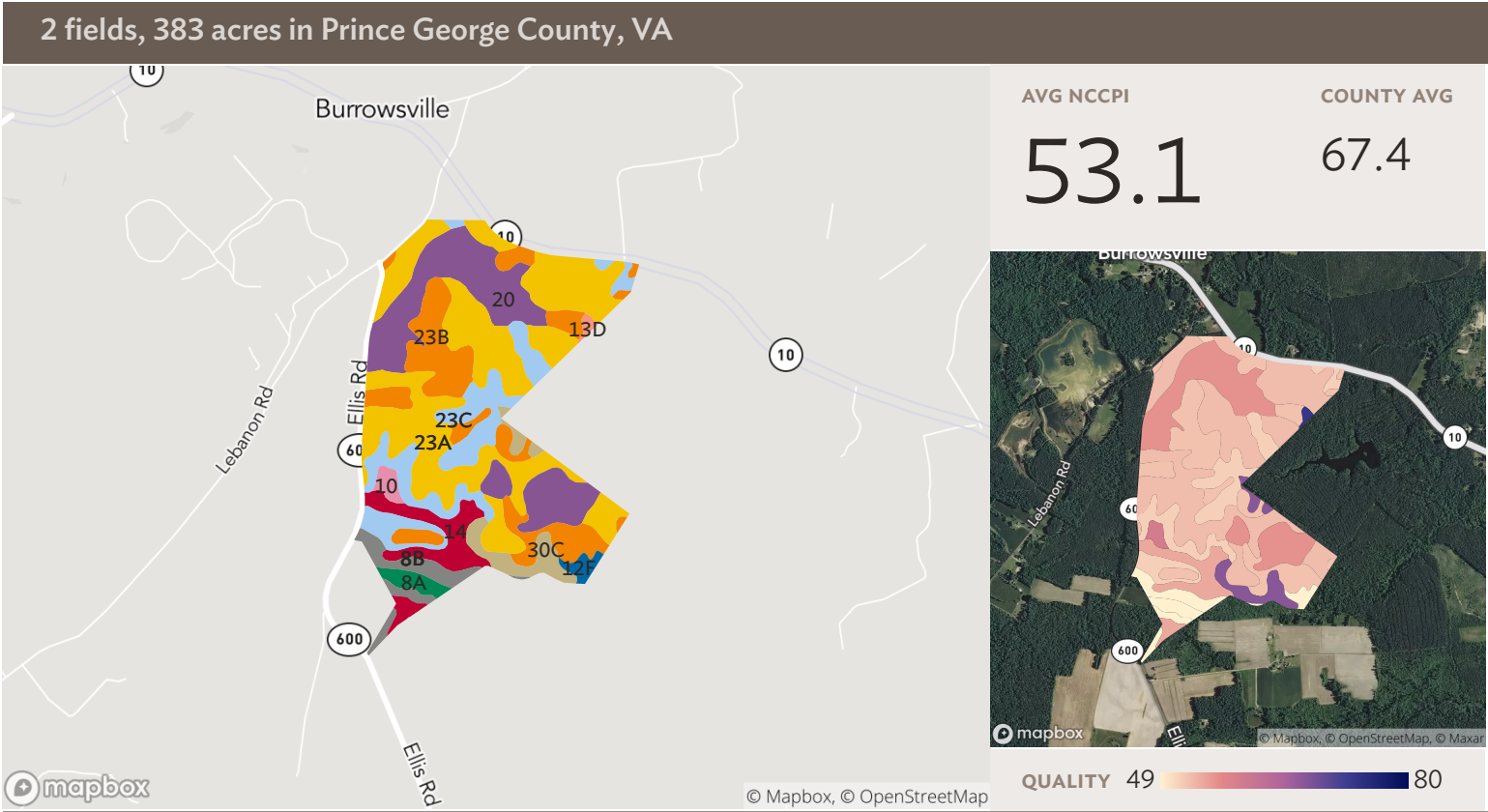


Field 1

Source: NRCS Soil Survey

25 ac

SOIL CODE	SOIL DESCRIPTION	ACRES	PERCENTAGE OF FIELD	SOIL CLASS	NCCPI
23A	Peawick silt loam, 0 to 2 percent slopes	12.87	52.0%	2	52.8
14	Kinston complex	3.34	13.5%	6	54.2
20	Newflat silt loam	2.77	11.2%	3	55.9
23C	Peawick silt loam, 6 to 10 percent slopes	2.60	10.5%	3	51.4
23B	Peawick silt loam, 2 to 6 percent slopes	2.37	9.6%	2	52.4
8B	Burrowsville sandy loam, 2 to 6 percent slopes	0.79	3.2%	2	43.7
					24.73
					52.9



Field 2

Source: NRCS Soil Survey

358 ac

SOIL CODE	SOIL DESCRIPTION	ACRES	PERCENTAGE OF FIELD	SOIL CLASS	NCCPI
23A	Peawick silt loam, 0 to 2 percent slopes	127.48	35.6%	2	52.8
20	Newflat silt loam	66.56	18.6%	3	55.9
23B	Peawick silt loam, 2 to 6 percent slopes	58.52	16.3%	2	52.4
23C	Peawick silt loam, 6 to 10 percent slopes	48.18	13.4%	3	51.4
14	Kinston complex	19.74	5.5%	6	54.2
30C	Wickham fine sandy loam, 6 to 10 percent slopes	13.40	3.7%	3	67.0
8B	Burrowsville sandy loam, 2 to 6 percent slopes	12.40	3.5%	2	43.7
8A	Burrowsville sandy loam, 0 to 2 percent slopes	5.06	1.4%	2	44.0
10	Chickahominy silt loam	3.19	0.9%	4	58.9

2 fields, 383 acres in Prince George County, VA

■	12F	Emporia soils, 15 to 45 percent slopes	2.90	0.8%	7	18.0
■	13D	Emporia and Slagle soils, 6 to 15 percent slopes	0.88	0.2%	4	73.2
			358.31			53.1

2 fields, 383 acres in Prince George County, VA

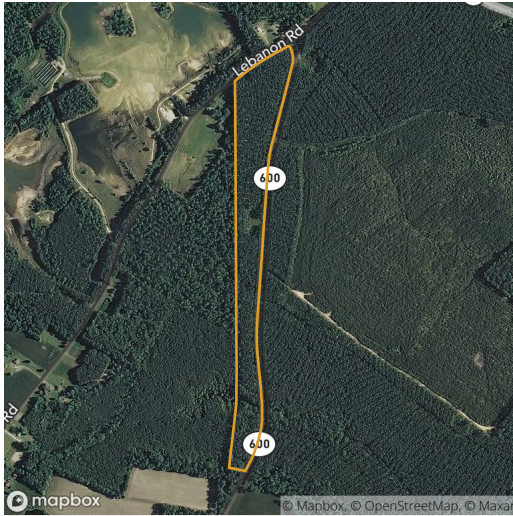


All fields

383 ac



	2019	2018	2017	2016	2015
Forest	88.6%	64.8%	65.7%	61.6%	63.6%
Non-Cropland	11.0%	34.8%	34.0%	37.8%	36.0%
Other	0.4%	0.3%	0.4%	0.6%	0.3%



Field 1

25 ac



	2019	2018	2017	2016	2015
Forest	80.7%	81.1%	82.4%	87.7%	68.2%
Non-Cropland	18.4%	18.4%	17.6%	12.3%	31.8%
Other	0.8%	0.5%	-	-	-



Field 2

358 ac



	2019	2018	2017	2016	2015
Forest	89.1%	63.7%	64.5%	59.8%	63.3%
Non-Cropland	10.5%	36.0%	35.1%	39.5%	36.3%
Other	0.4%	0.3%	0.4%	0.7%	0.4%

Source: NASS Cropland Data Layer