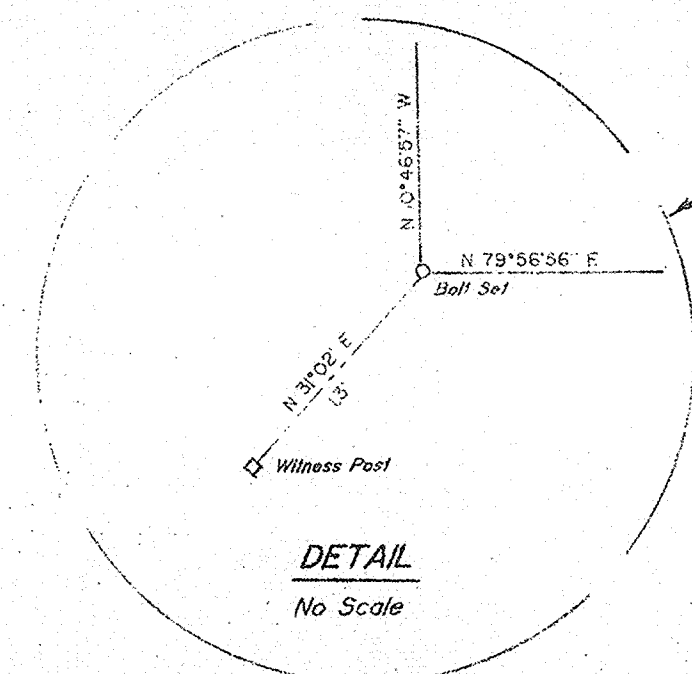


DIAMOND OCCIDENTAL FOREST INC.

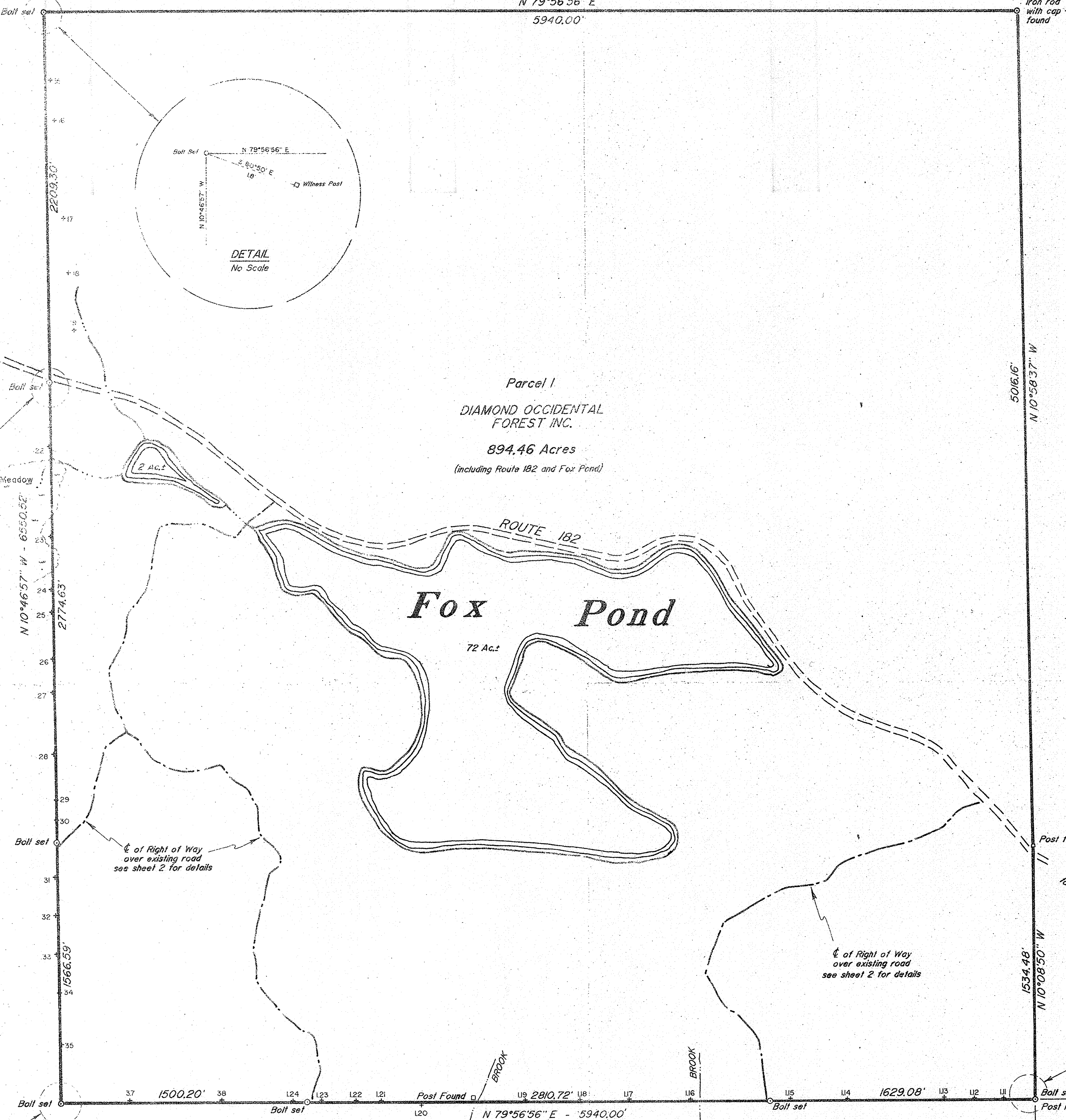
NOTES:
 All information shown hereon is obtained from a closed traverse using a 5 second electronic semi-tal station instrument with a precision ratio of 10431.
 Bearings shown are based on Grid North from a solar observation taken on Route 182 at the westerly Right of Way. True North is 13°55' west of Grid North at this location.
 No attempt has been made to determine the validity of existing monumentation.
 90 Denotes traverse station.
 Location of Fox Pond and Route 182 taken from USGS topo sheet.



Richard Salisbury
 HERRICK & SALSBERY, Inc.
 Land Surveyors
 Ellsworth, Maine 04605

CHAMPION INTERNATIONAL

N 79°56'56" E
 5940.00'



Parcel 1
 DIAMOND OCCIDENTAL FOREST INC.
 894.46 Acres
 (Including Route 182 and Fox Pond)

DIAMOND OCCIDENTAL FOREST INC.

PIERCE

MAINE COAST HERITAGE TRUST

Survey of parcel 1

DIAMOND OCCIDENTAL FOREST INC.

FOX POND

TWP 10 SD

MAINE

SCALE - 1" = 400'

FEBRUARY 19, 1988

